



West
Virginia
Highlands
Conservancy

P. O. Box 306
Charleston
WV 25321
<http://www.wvhighlands.org/>

Dolly Sods Roaring Plains Area 24K Topo Maps

These maps make use of the latest GPS and GIS data available as of July 2005. They show all the new trail names in Dolly Sods North assigned by the Forest Service last year. There are a few trails that go outside the boundary of the Monongahela National Forest. The Forest Service is working on rerouting these trails so they are inside the boundary. Trails compiled by USFS personnel using GPS and GIS Technology. Current as of 2005.

The West Virginia Highlands Conservancy makes available this PDF document and maps printed from it free to any one who wants to explore this great area. We ask that you do not sell or distribute these maps for commercial purposes. If you would like to join the West Virginia Highlands Conservancy and help protect areas like this, use the application on the last page or go to <http://www.wvhighlands.org/cubecart/index.php?act=viewCat&catId=1>

Printed with the page scaling set to none on letter size paper, these maps will maintain their 1:24000 scale. Make sure you have the Adobe Reader print dialog set to the page you want to print.

I have not included the magnetic declination because it is very dynamic. In 1997, the magnetic declination for this area was 8.5 degrees west. For more info go to <http://geomag.usgs.gov/> .

Background for maps provided by USGS/USFS Single-Edition Topographic maps published 1995. For more info on USGS Topographic Maps go to <http://erg.usgs.gov/isb/pubs/booklets/symbols/>
http://mapserver.maptech.com/mapserver/topographic_symbols/USGS_top.html
<http://erg.usgs.gov/isb/pubs/booklets/symbols/topomapsymbols.pdf>
<http://erg.usgs.gov/isb/pubs/factsheets/fs09498.html#different>

Jim Solley
West Virginia Highlands Conservancy

639000 m 640000 m 641000 m 642000 m 643000 m 644000 m 645000 m 646000 m 647000 m 648000 m

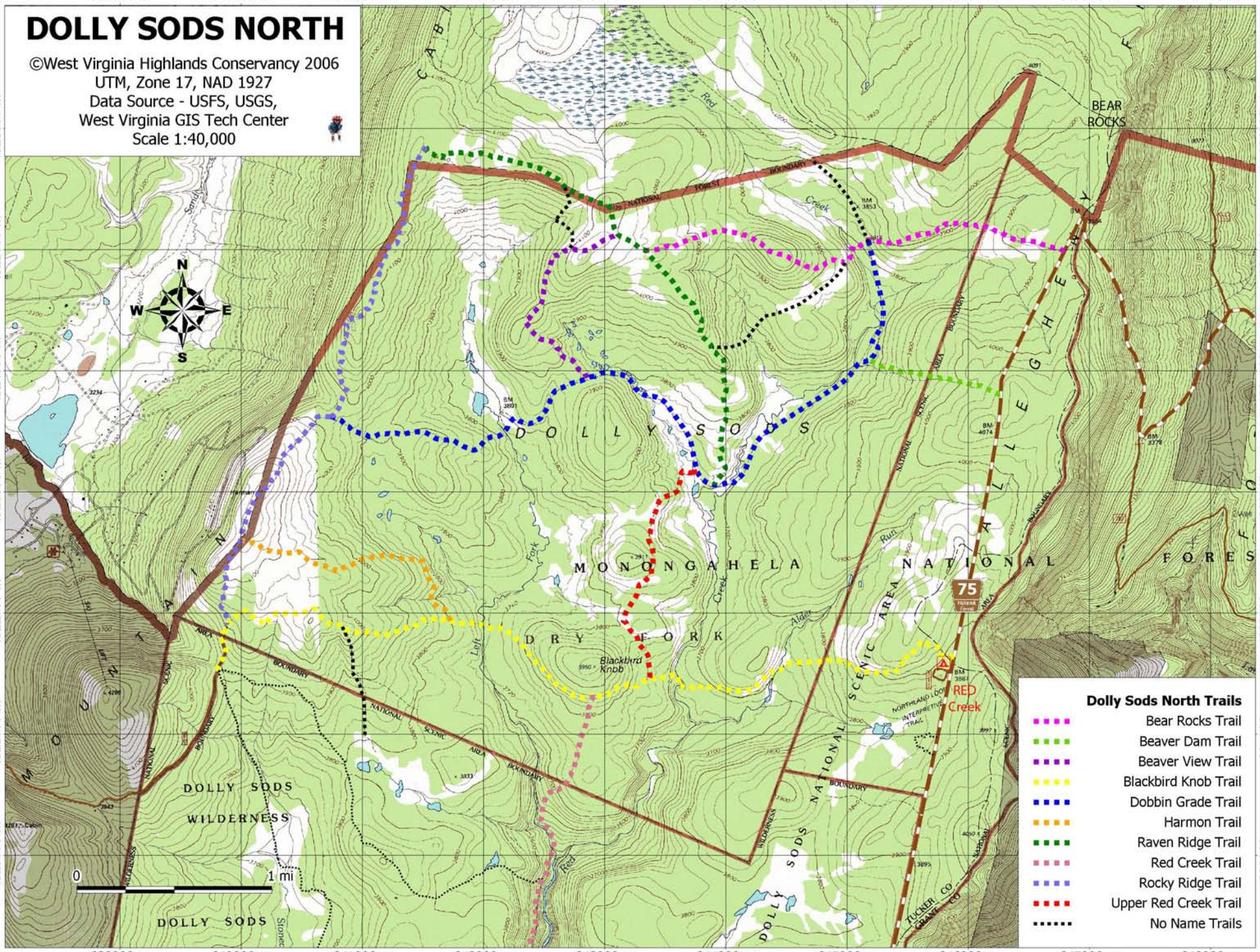
DOLLY SODS NORTH

©West Virginia Highlands Conservancy 2006
UTM, Zone 17, NAD 1927
Data Source - USFS, USGS,
West Virginia GIS Tech Center
Scale 1:40,000



4326000 m
4325000 m
4324000 m
4323000 m
4322000 m
4321000 m
4320000 m

4326000 m
4325000 m
4324000 m
4323000 m
4322000 m
4321000 m
4320000 m



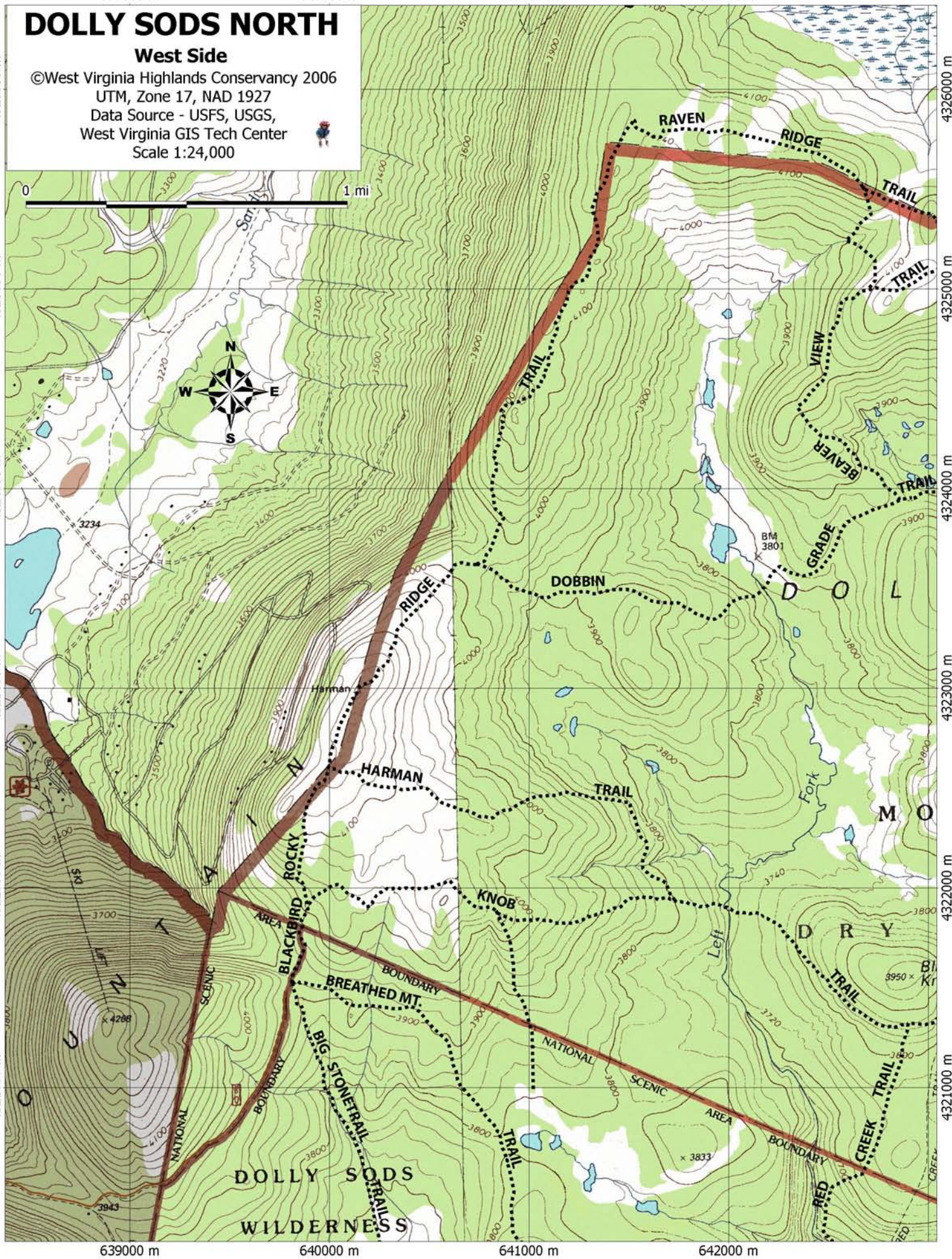
Dolly Sods North Trails

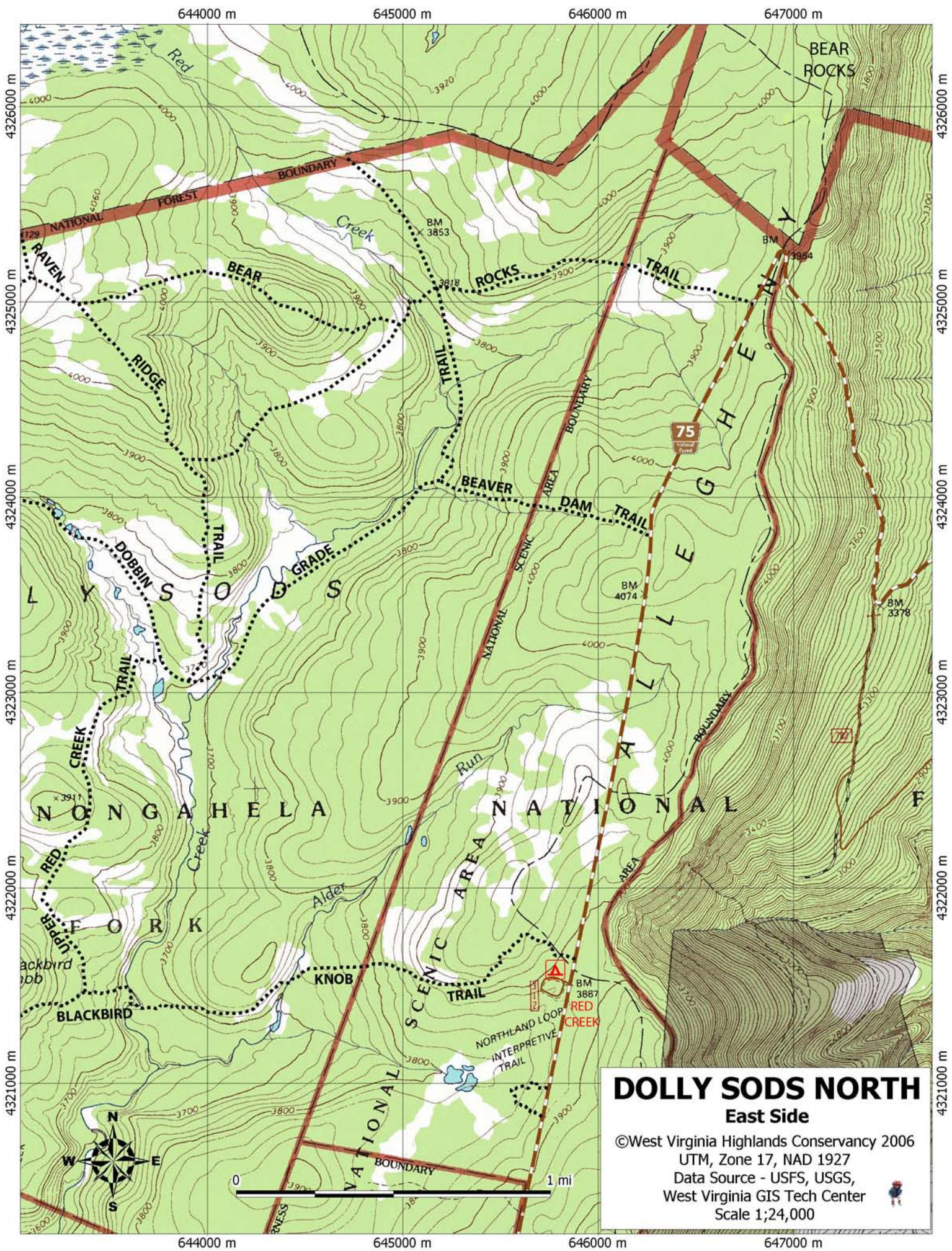
- Bear Rocks Trail
- Beaver Dam Trail
- Beaver View Trail
- Blackbird Knob Trail
- Dobbin Grade Trail
- Harmon Trail
- Raven Ridge Trail
- Red Creek Trail
- Rocky Ridge Trail
- Upper Red Creek Trail
- No Name Trails

DOLLY SODS NORTH

West Side

©West Virginia Highlands Conservancy 2006
UTM, Zone 17, NAD 1927
Data Source - USFS, USGS,
West Virginia GIS Tech Center
Scale 1:24,000





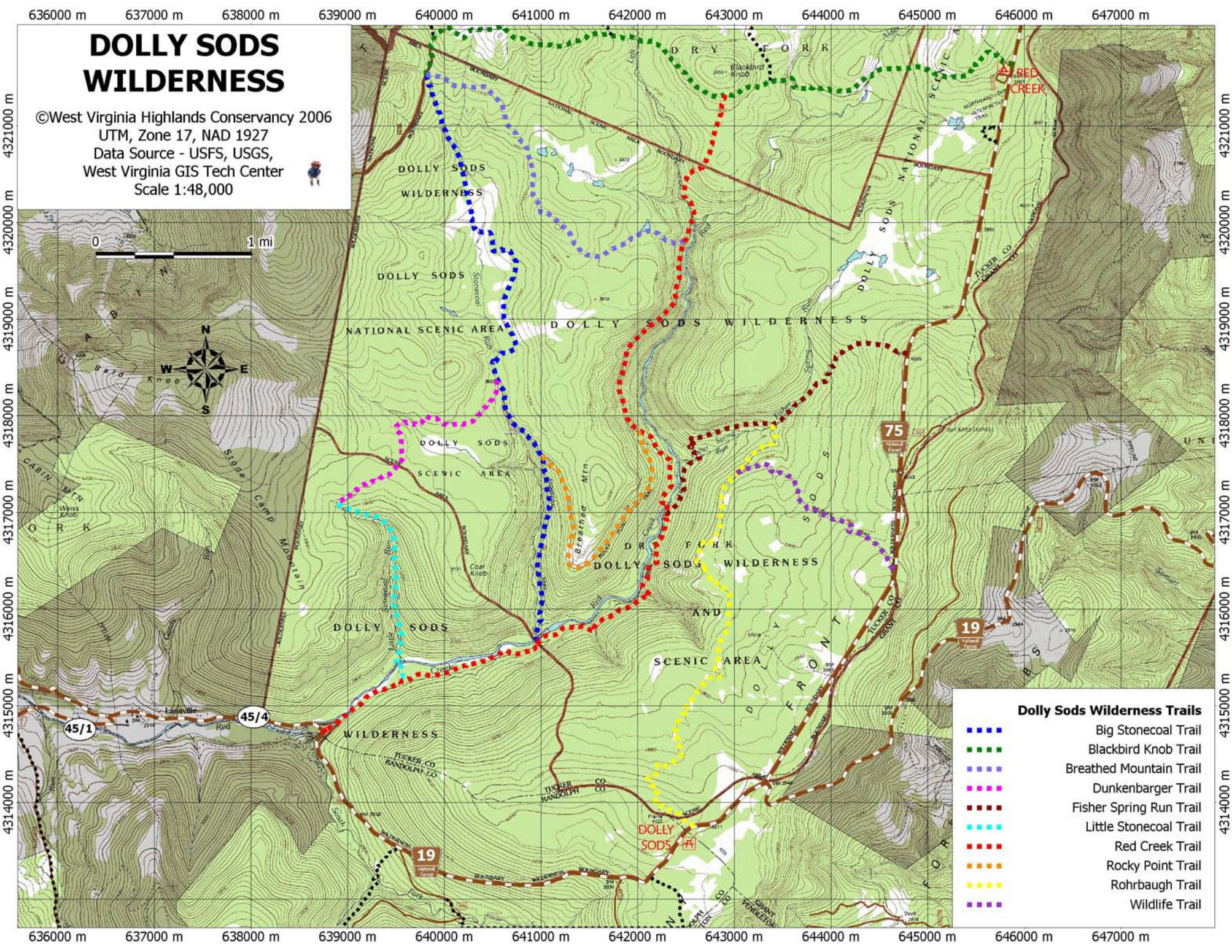
DOLLY SODS NORTH

East Side

©West Virginia Highlands Conservancy 2006
 UTM, Zone 17, NAD 1927
 Data Source - USFS, USGS,
 West Virginia GIS Tech Center
 Scale 1:24,000

DOLLY SODS WILDERNESS

©West Virginia Highlands Conservancy 2006
 UTM, Zone 17, NAD 1927
 Data Source - USFS, USGS,
 West Virginia GIS Tech Center
 Scale 1:48,000



Dolly Sods Wilderness Trails

- Big Stonecoal Trail
- Blackbird Knob Trail
- Breathed Mountain Trail
- Dunkenbarger Trail
- Fisher Spring Run Trail
- Little Stonecoal Trail
- Red Creek Trail
- Rocky Point Trail
- Rohrbaugh Trail
- Wildlife Trail

637000 m

638000 m

639000 m

640000 m

641000 m

DOLLY SODS WILDERNESS

Northwest

©West Virginia Highlands Conservancy 2006

UTM, Zone 17, NAD 1927

Data Source - USFS, USGS,
West Virginia GIS Tech Center

Scale 1;24,000



4322000 m

4321000 m

4320000 m

4319000 m

4318000 m

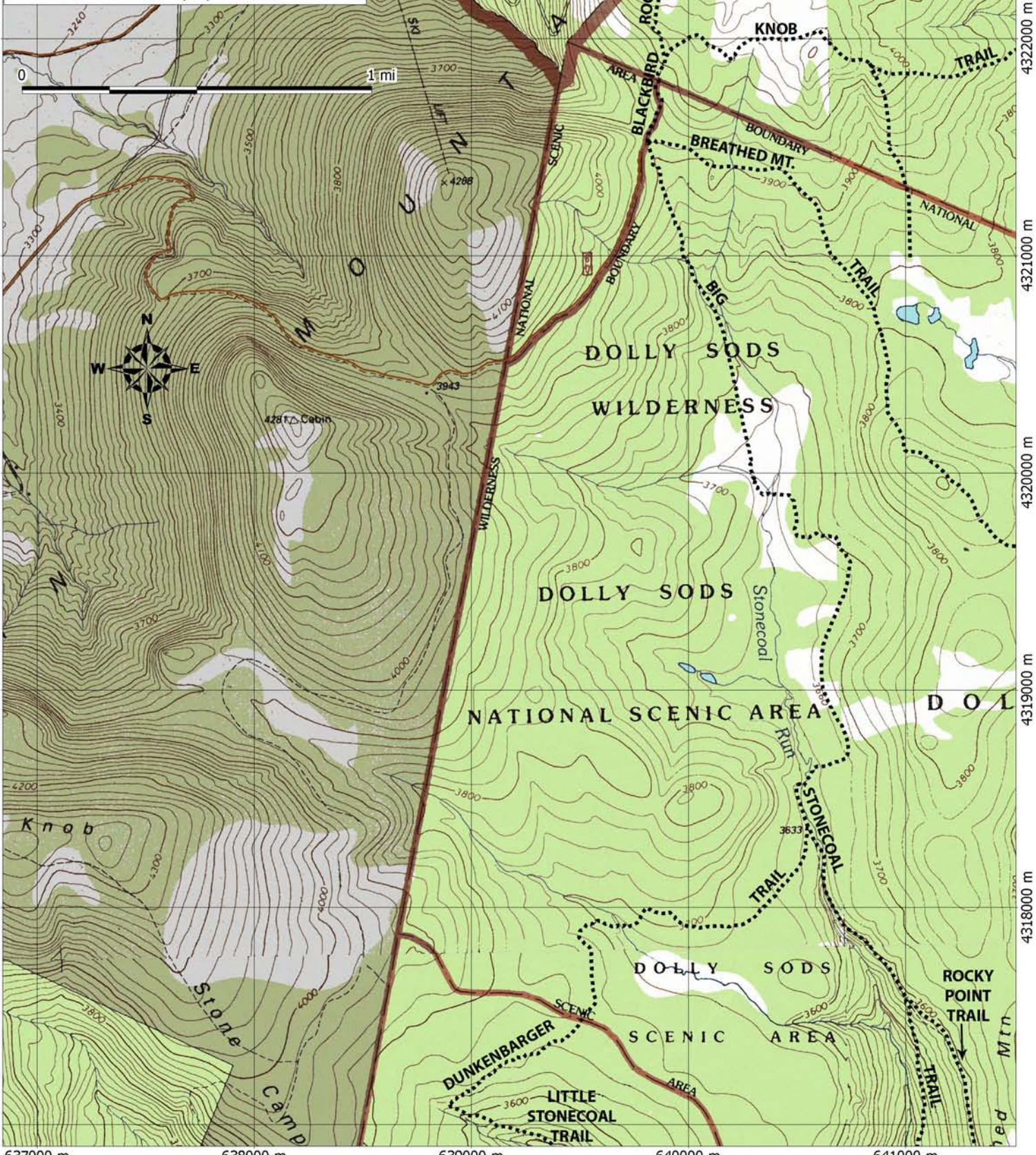
4322000 m

4321000 m

4320000 m

4319000 m

4318000 m



637000 m

638000 m

639000 m

640000 m

641000 m

642000 m

643000 m

644000 m

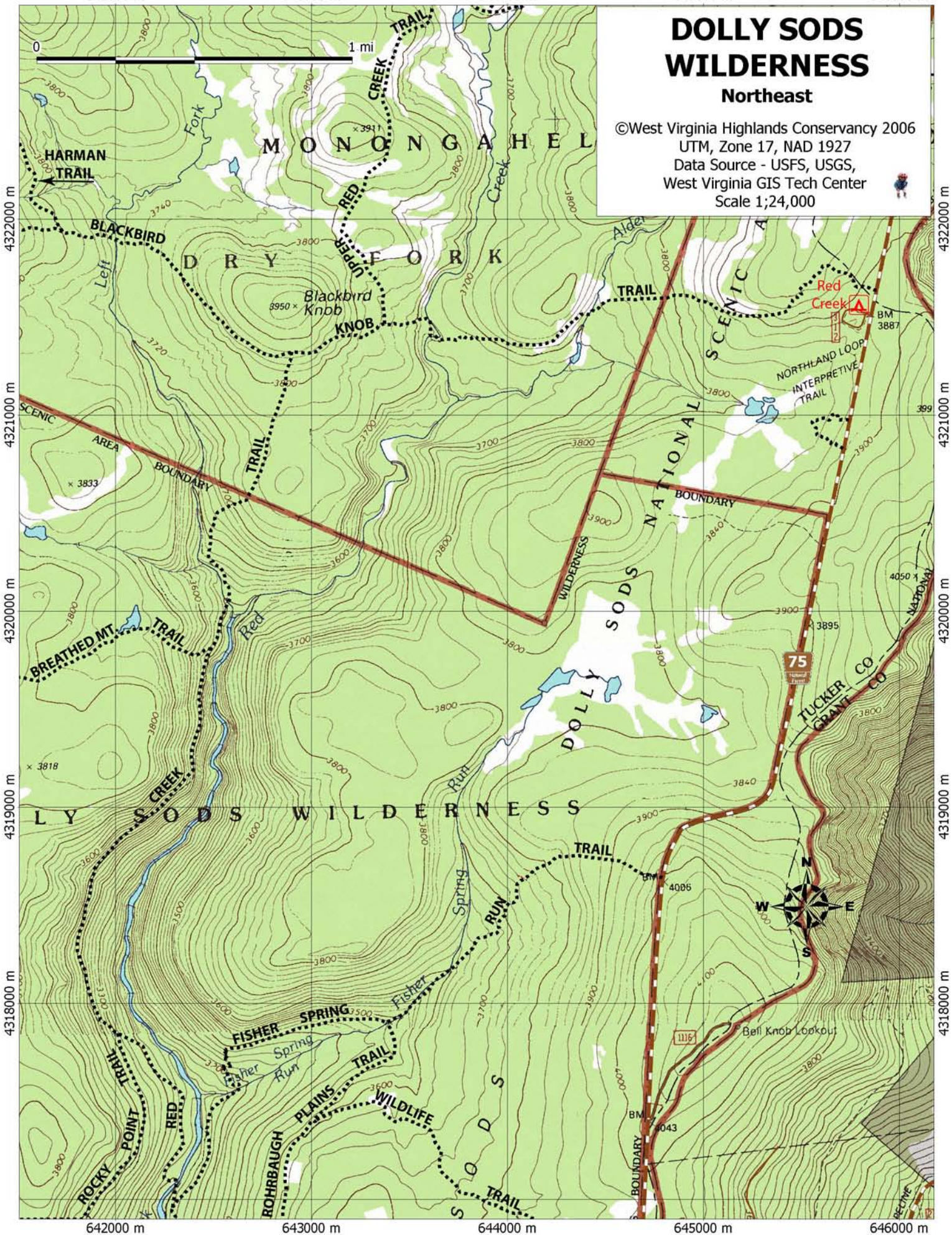
645000 m

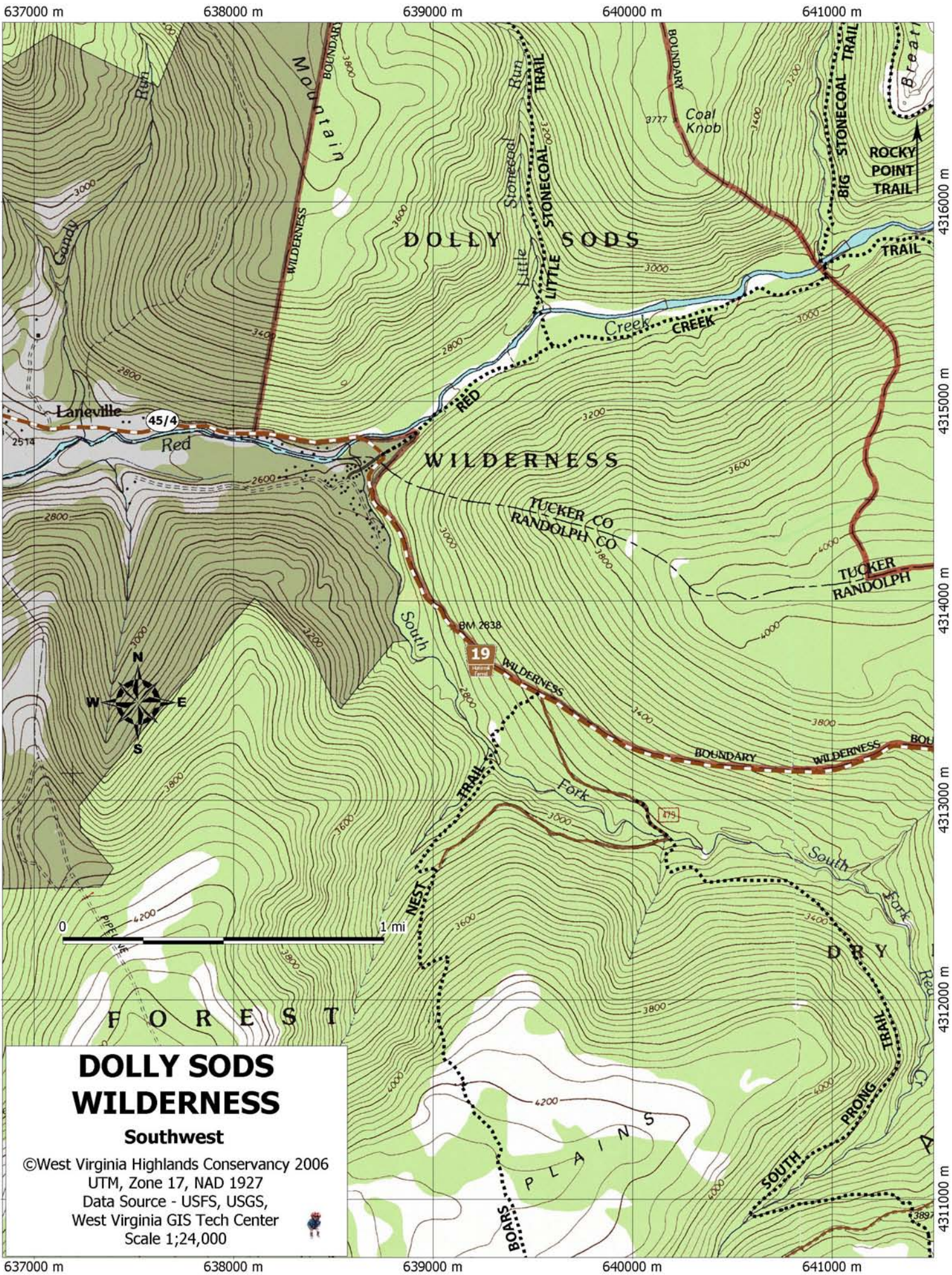
646000 m

DOLLY SODS WILDERNESS

Northeast

©West Virginia Highlands Conservancy 2006
 UTM, Zone 17, NAD 1927
 Data Source - USFS, USGS,
 West Virginia GIS Tech Center
 Scale 1:24,000



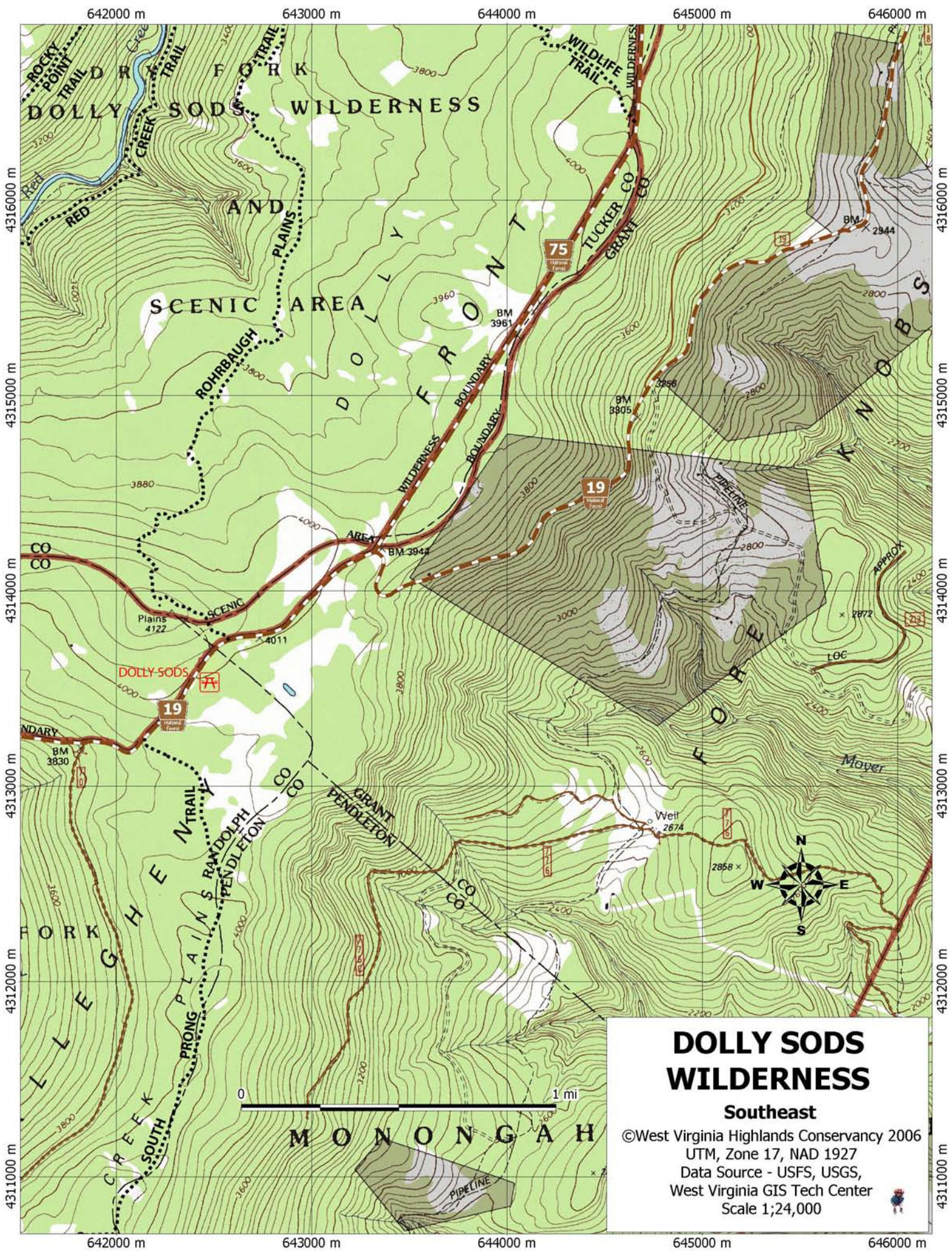


DOLLY SODS WILDERNESS

Southwest

©West Virginia Highlands Conservancy 2006
 UTM, Zone 17, NAD 1927
 Data Source - USFS, USGS,
 West Virginia GIS Tech Center
 Scale 1:24,000



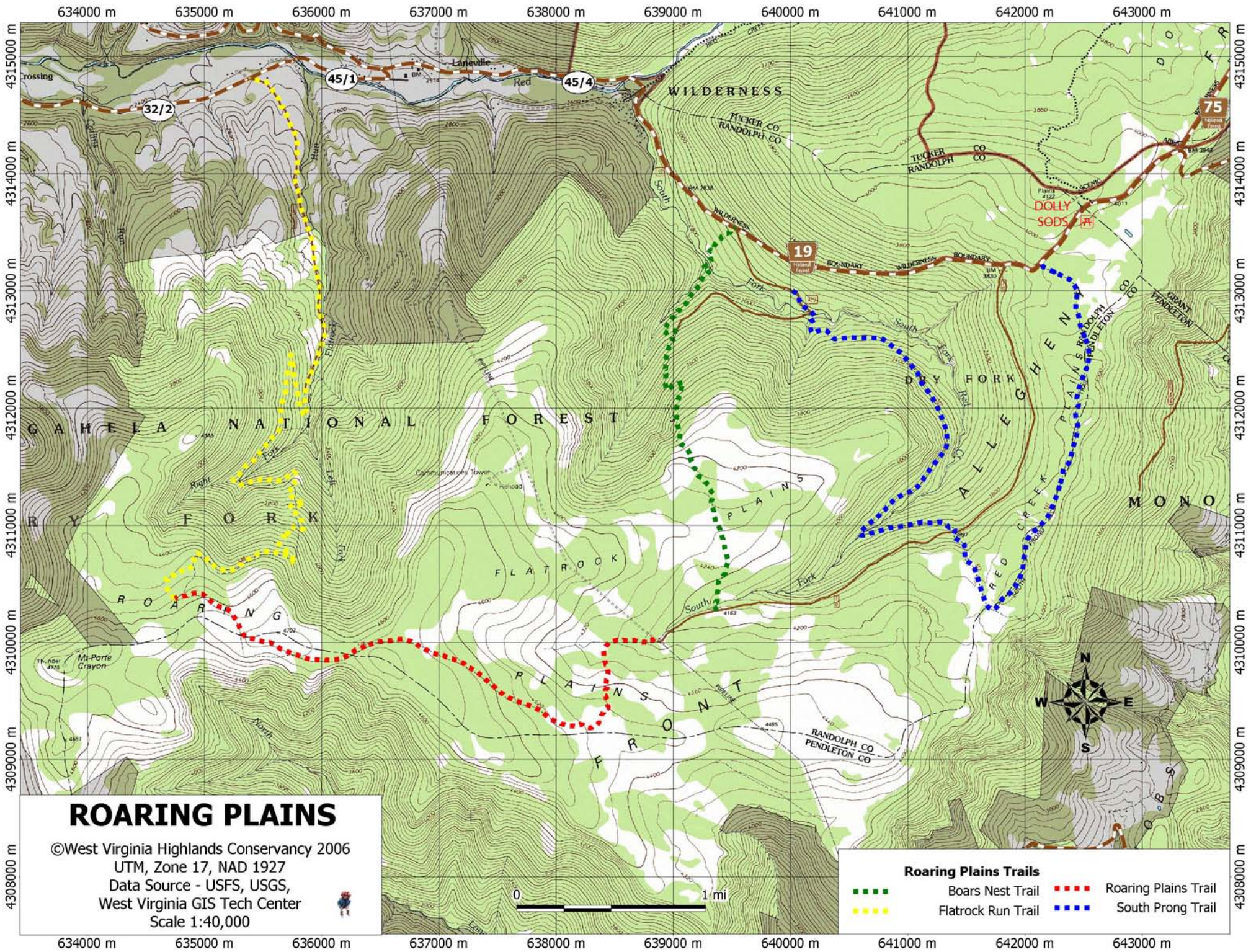


DOLLY SODS WILDERNESS

Southeast

©West Virginia Highlands Conservancy 2006
 UTM, Zone 17, NAD 1927
 Data Source - USFS, USGS,
 West Virginia GIS Tech Center
 Scale 1:24,000



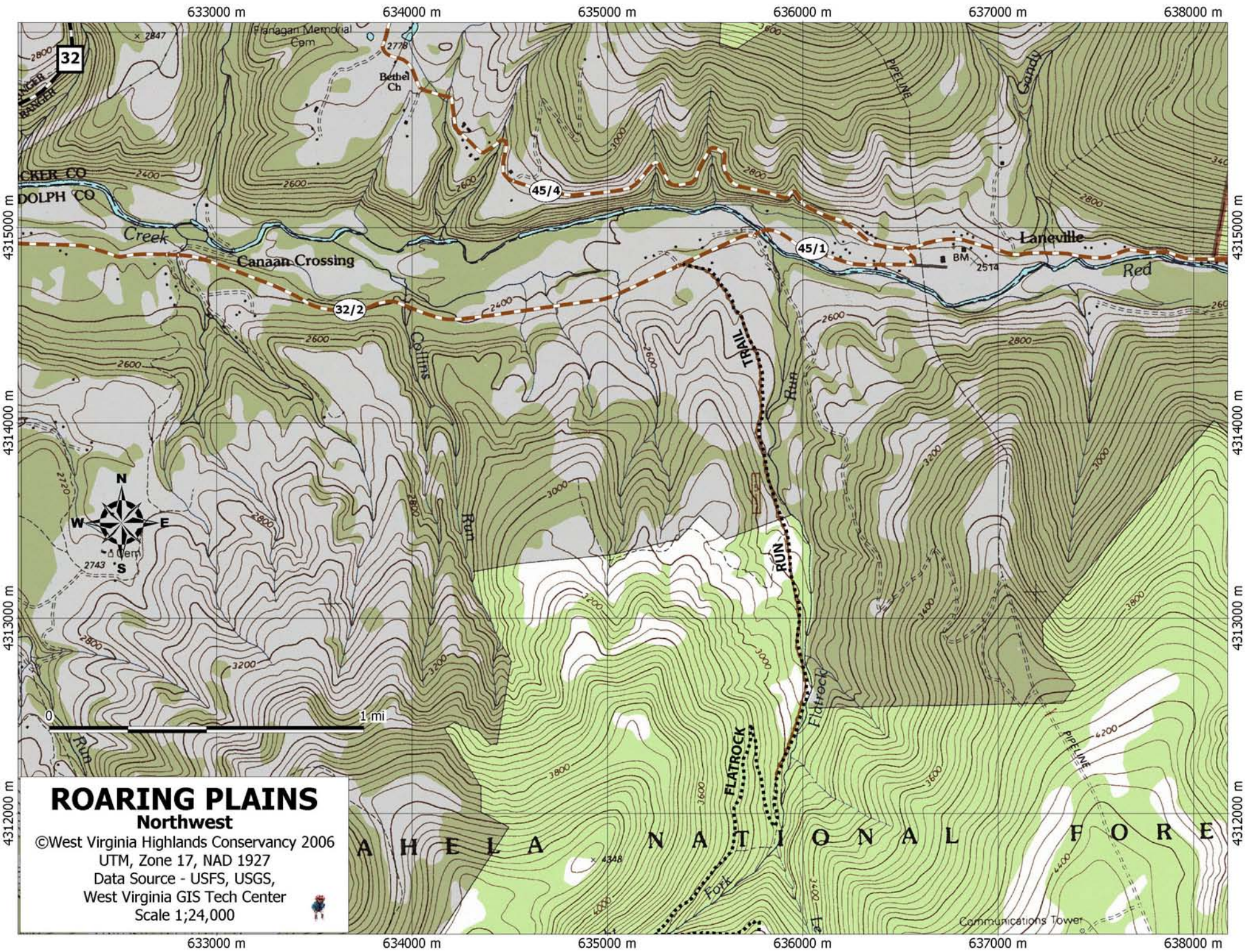


ROARING PLAINS

©West Virginia Highlands Conservancy 2006
 UTM, Zone 17, NAD 1927
 Data Source - USFS, USGS,
 West Virginia GIS Tech Center
 Scale 1:40,000



- Roaring Plains Trails**
- - - Boars Nest Trail
 - - - Flatrock Run Trail
 - - - Roaring Plains Trail
 - - - South Prong Trail

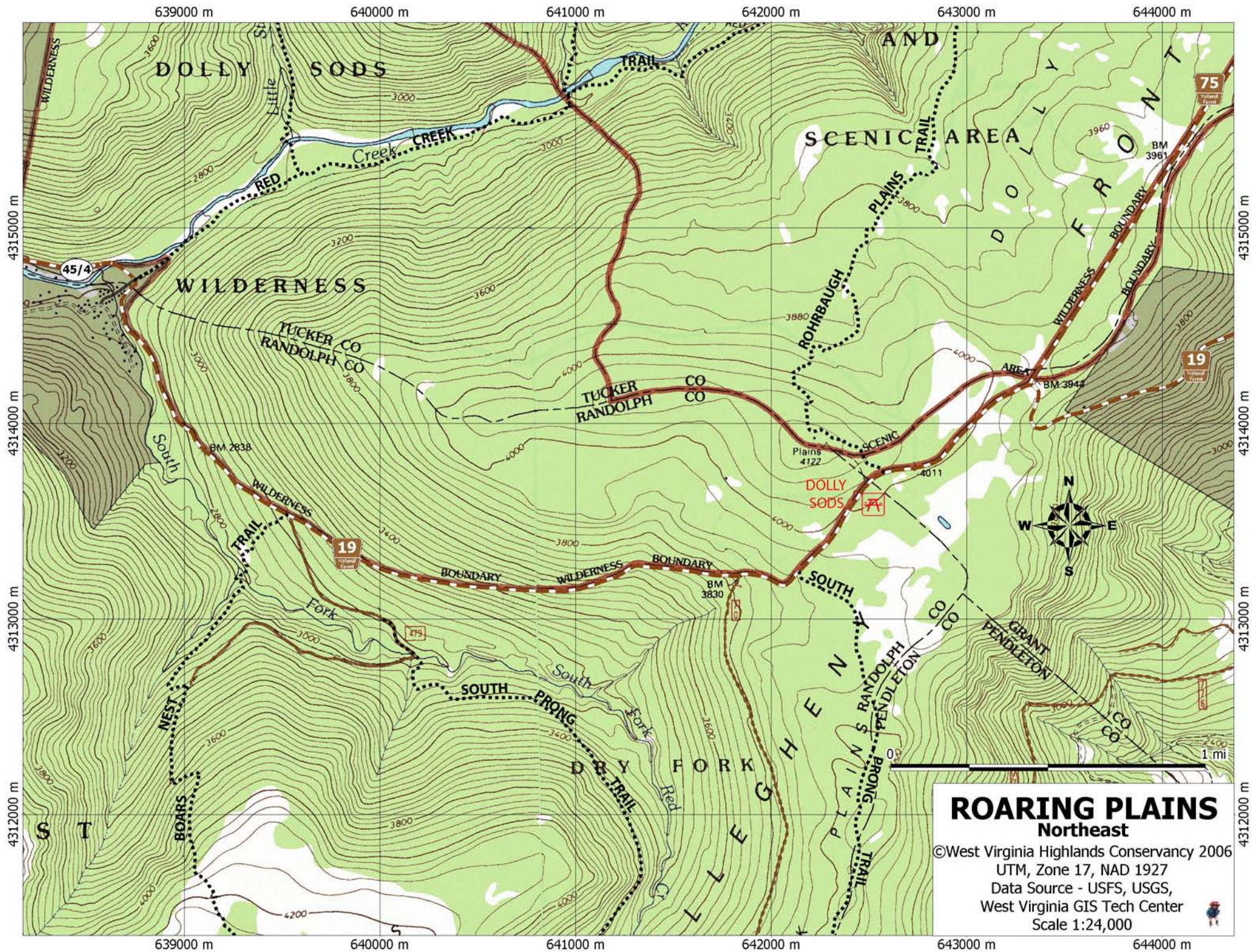


ROARING PLAINS Northwest

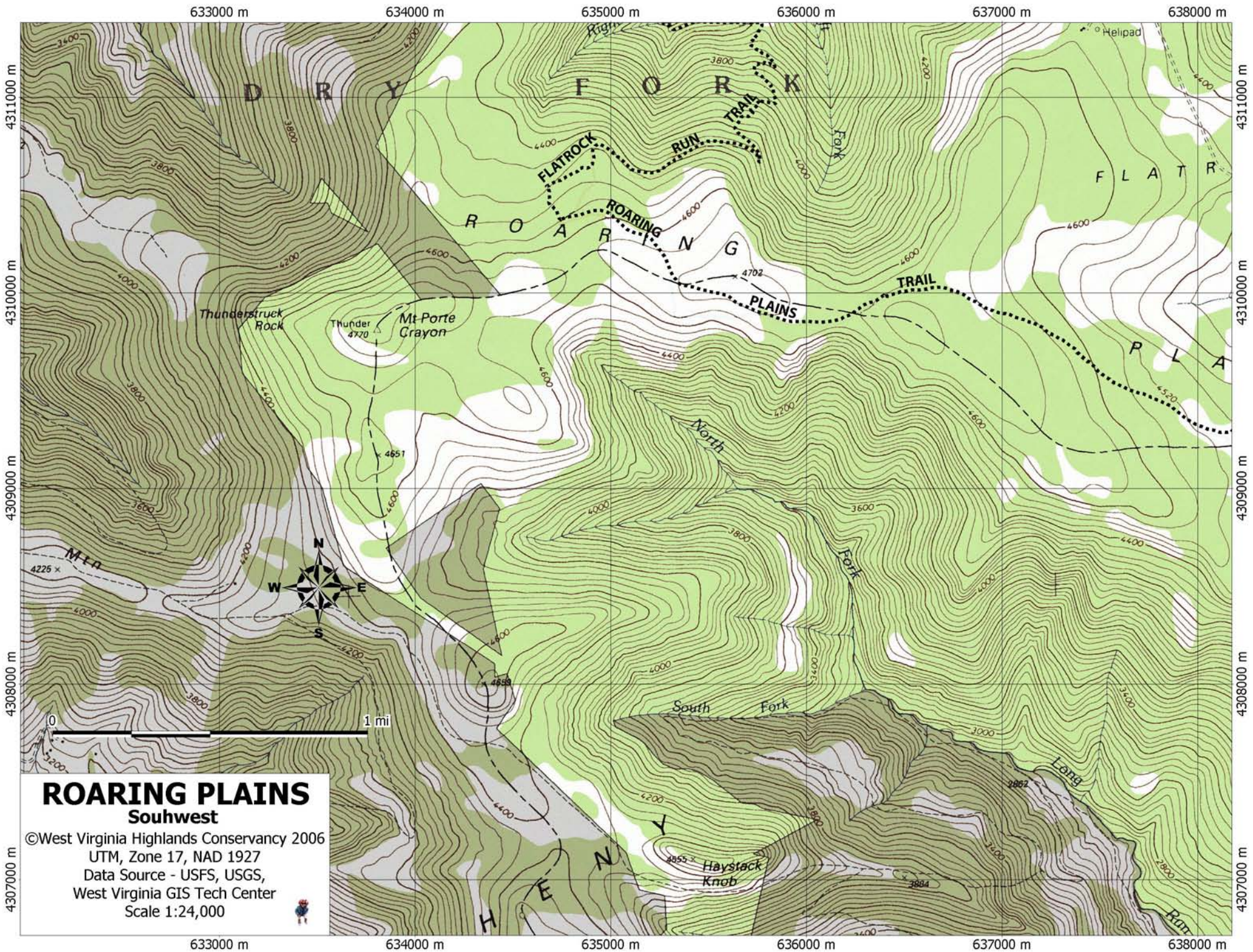
©West Virginia Highlands Conservancy 2006
UTM, Zone 17, NAD 1927
Data Source - USFS, USGS,
West Virginia GIS Tech Center
Scale 1:24,000



A H E L A N A T I O N A L F O R E



ROARING PLAINS
Northeast
 ©West Virginia Highlands Conservancy 2006
 UTM, Zone 17, NAD 1927
 Data Source - USFS, USGS,
 West Virginia GIS Tech Center
 Scale 1:24,000

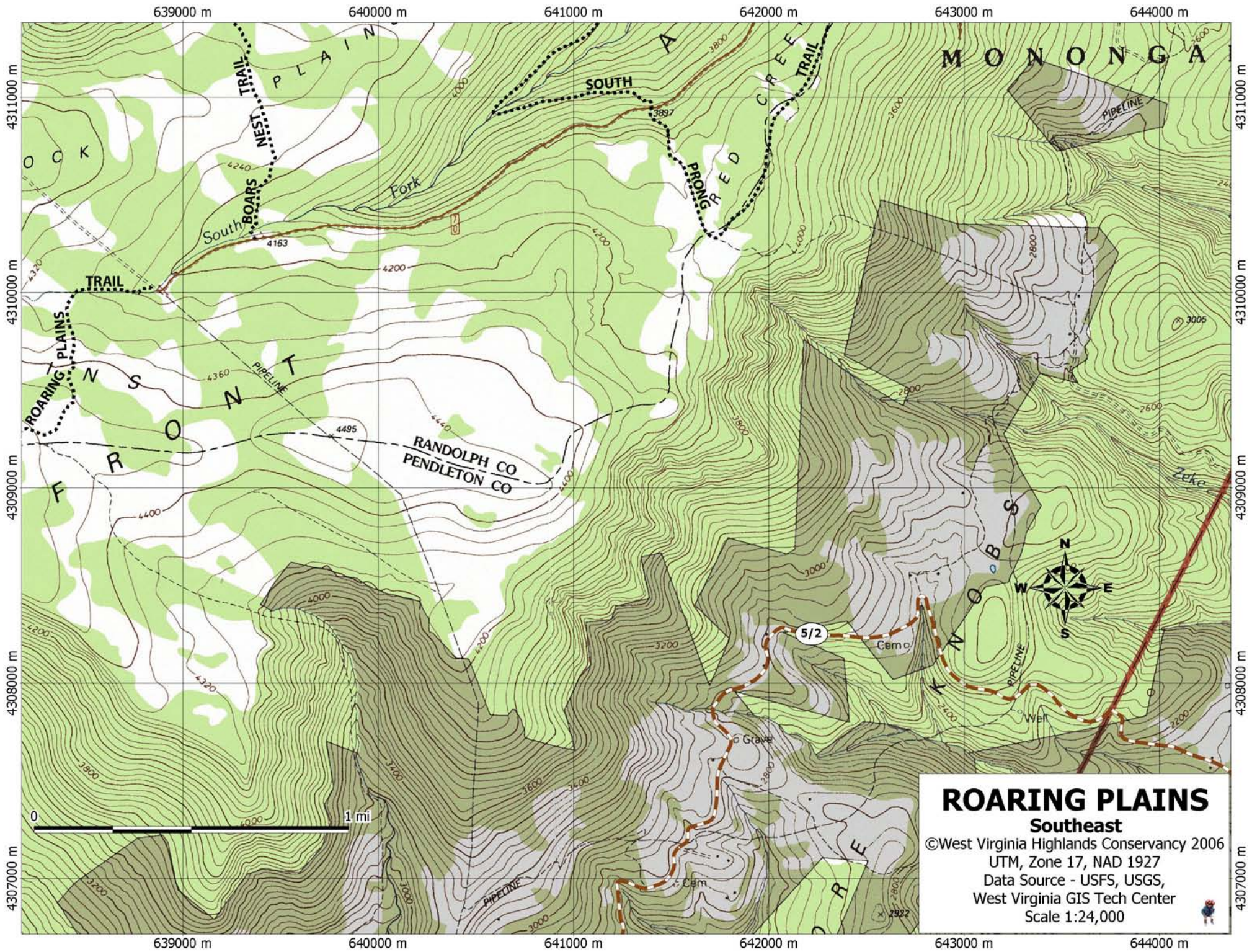


ROARING PLAINS

Souhwest

©West Virginia Highlands Conservancy 2006
UTM, Zone 17, NAD 1927
Data Source - USFS, USGS,
West Virginia GIS Tech Center
Scale 1:24,000





ROARING PLAINS

Southeast

©West Virginia Highlands Conservancy 2006
UTM, Zone 17, NAD 1927
Data Source - USFS, USGS,
West Virginia GIS Tech Center
Scale 1:24,000





West
Virginia
Highlands
Conservancy

P. O. Box 306
Charleston
WV 25321
<http://www.wvhighlands.org/>

Join Now!!!

Yes! Sign me up.

Name.....

Address.....

City.....State.....Zip.....

Membership categories (circle one)

| | <u>Individual</u> | <u>Family</u> | <u>Org</u> |
|------------------------------------|-------------------|---------------|------------|
| Senior | \$15 | | |
| Student/ Introductory/ Other | \$15 | | |
| Regular | \$25 | \$35 | \$50 |
| Associate | \$50 | \$75 | \$100 |
| Sustaining | \$100 | \$150 | \$200 |
| Patron | \$250 | \$250 | \$500 |
| Mountaineer | \$500 | \$750 | \$1000 |

**Mail to
West Virginia Highlands Conservancy
PO Box 306
Charleston, WV 25321**